

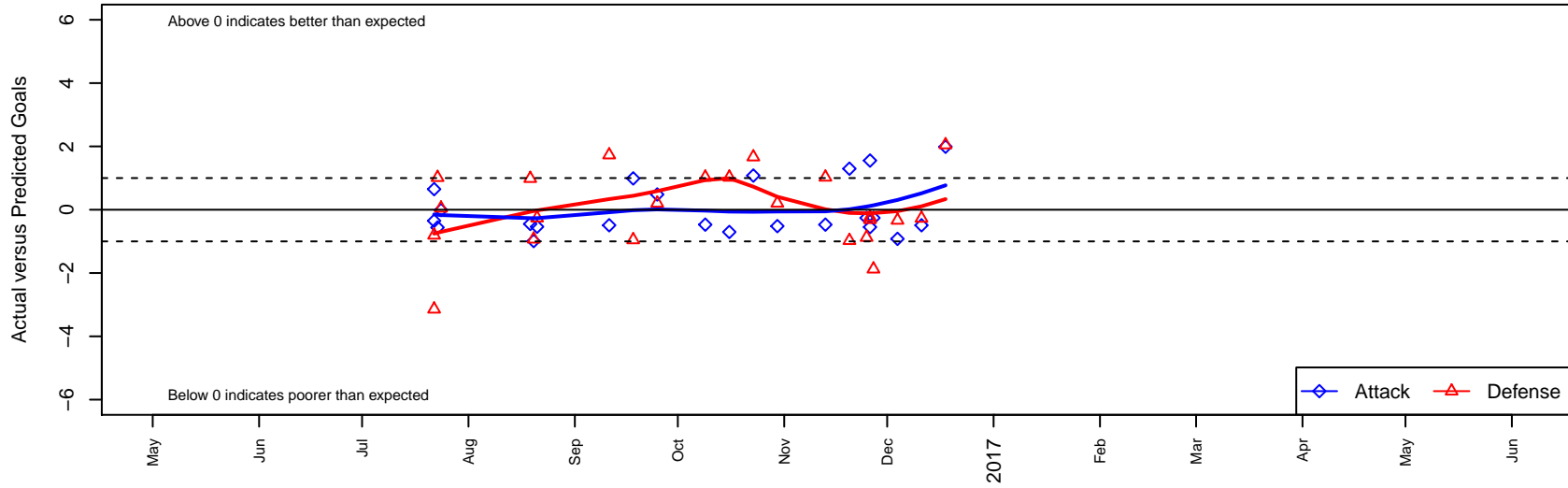
NSC Edge Green B99

Northshore SC
 Woodinville, WA
 B99 total strength=1255
 attack=4.72 defense=4.96
 fall league = NPSL Div 2 (98) U19

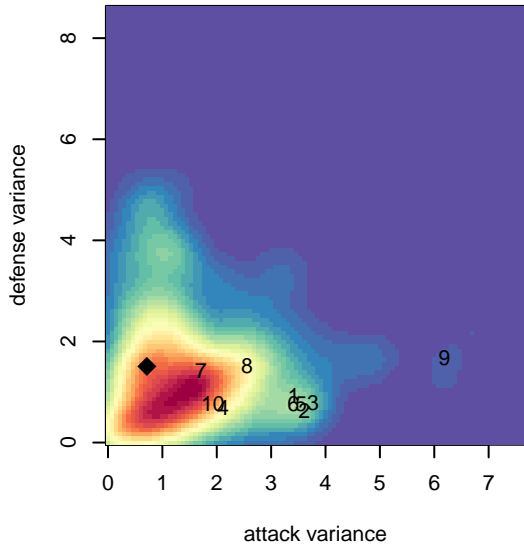
alt names used:
 NSC B99 Green- Edge

Venues played:
 2016 Crossfire Select U19 Silver
 2016 Xtreme Cup BU18
 2016 NPSL Division 2 (98) U19
 2016 Cranberry Cup U17-19

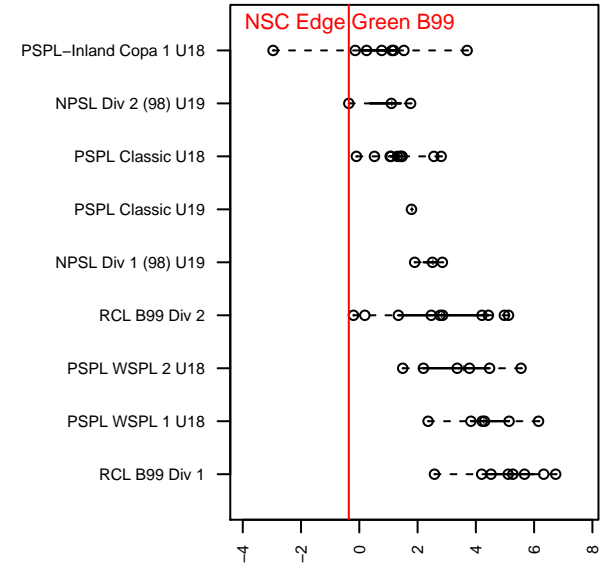
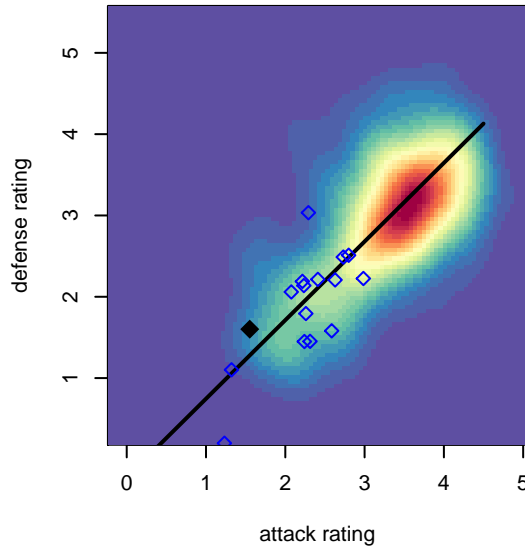
NSC Edge Green B99
 Dots are actual minus expected GF (blue circles) and GA (red triangles).
 Blue line is smoothed change in attack strength. Red is smoothed change in defense strength.



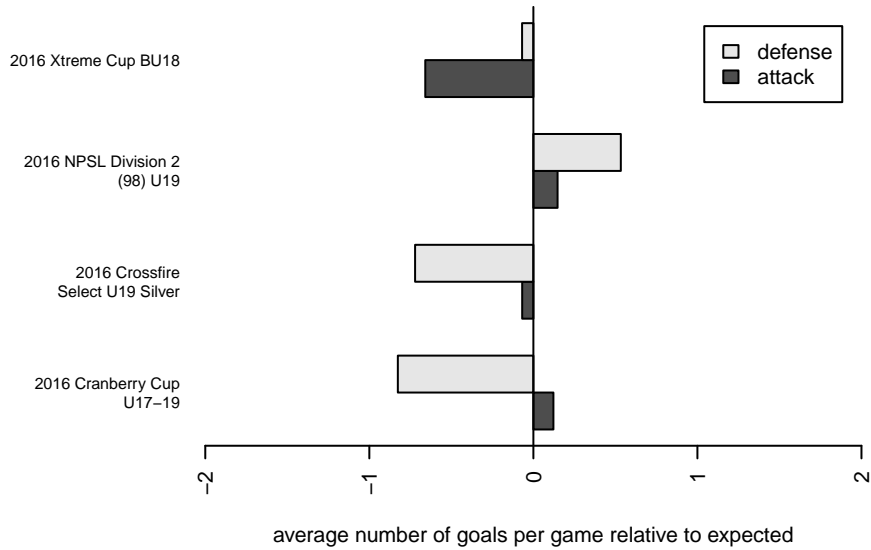
**attack and defense variance (black dot)
relative to other teams
and top 10 in region**



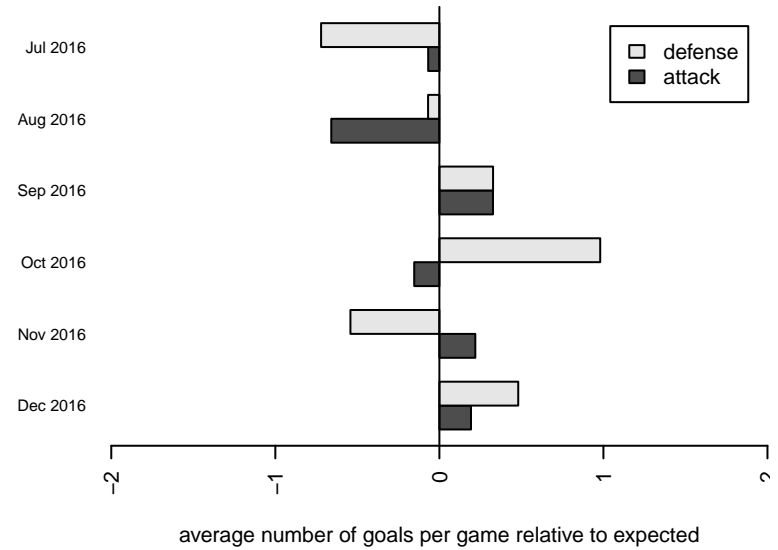
**attack and defense rating
relative to others at age
and all opponents in last 13 months**



Performance relative to 13 month average



Performance relative to 13 month average



date	home		away		venue	pred.home	pred.away
2016-12-18	NSC Edge Green B99	3	PSA Force Black B98	0	2016 NPSL Division 2 (98) U19	1.01	2.05
2016-12-11	South Whidbey Wild B98	3	NSC Edge Green B99	0	2016 NPSL Division 2 (98) U19	2.73	0.49
2016-12-04	Storm King B99	3	NSC Edge Green B99	0	2016 NPSL Division 2 (98) U19	2.67	0.92
2016-11-27	Irish Lions B98	4	NSC Edge Green B99	0	2016 Cranberry Cup U17-19	2.12	0.26
2016-11-26	NSC Edge Green B99	3	Granite Fall Hydro B98	1	2016 Cranberry Cup U17-19	3.55	0.69
2016-11-26	South Kitsap United B98	1	NSC Edge Green B99	3	2016 Cranberry Cup U17-19	0.76	1.45
2016-11-25	NSC Edge Green B99	0	Irish Lions B98	3	2016 Cranberry Cup U17-19	0.26	2.12
2016-11-20	NSC Edge Green B99	2	Kent United White B98	3	2016 NPSL Division 2 (98) U19	0.70	2.02
2016-11-13	NSC Edge Green B99	0	Mercer Island FC Whitecaps B98	3	2016 NPSL Division 2 (98) U19	0.47	4.03
2016-10-30	NSC Edge Green B99	0	Mukilteo Rush Irish Lions B99	2	2016 NPSL Division 2 (98) U19	0.52	2.21
2016-10-23	NSC Edge Green B99	2	Storm King B99	1	2016 NPSL Division 2 (98) U19	0.92	2.67
2016-10-16	Kent United White B98	1	NSC Edge Green B99	0	2016 NPSL Division 2 (98) U19	2.02	0.70
2016-10-09	Mercer Island FC Whitecaps B98	3	NSC Edge Green B99	0	2016 NPSL Division 2 (98) U19	4.03	0.47
2016-09-25	Mukilteo Rush Irish Lions B99	2	NSC Edge Green B99	1	2016 NPSL Division 2 (98) U19	2.21	0.52
2016-09-18	PSA Force Black B98	3	NSC Edge Green B99	2	2016 NPSL Division 2 (98) U19	2.05	1.01
2016-09-11	NSC Edge Green B99	0	South Whidbey Wild B98	1	2016 NPSL Division 2 (98) U19	0.49	2.73
2016-08-21	Nortac Sparta Red B99	2	NSC Edge Green B99	0	2016 Xtreme Cup BU18	1.74	0.54
2016-08-20	FPSC Strikers B99	3	NSC Edge Green B99	0	2016 Xtreme Cup BU18	2.07	0.99
2016-08-19	NSC Edge Green B99	0	Emerald City FC White B99	1	2016 Xtreme Cup BU18	0.45	1.99
2016-07-24	NSC Edge Green B99	1	PSA Force Black B98	2	2016 Crossfire Select U19 Silver	1.01	2.05
2016-07-23	NK United B99	1	NSC Edge Green B99	0	2016 Crossfire Select U19 Silver	2.02	0.56
2016-07-22	NSC Edge Green B99	0	Seattle United Shoreline Blue B98	6	2016 Crossfire Select U19 Silver	0.35	2.86
2016-07-22	Lake Hills Flash B98	4	NSC Edge Green B99	1	2016 Crossfire Select U19 Silver	3.19	0.35